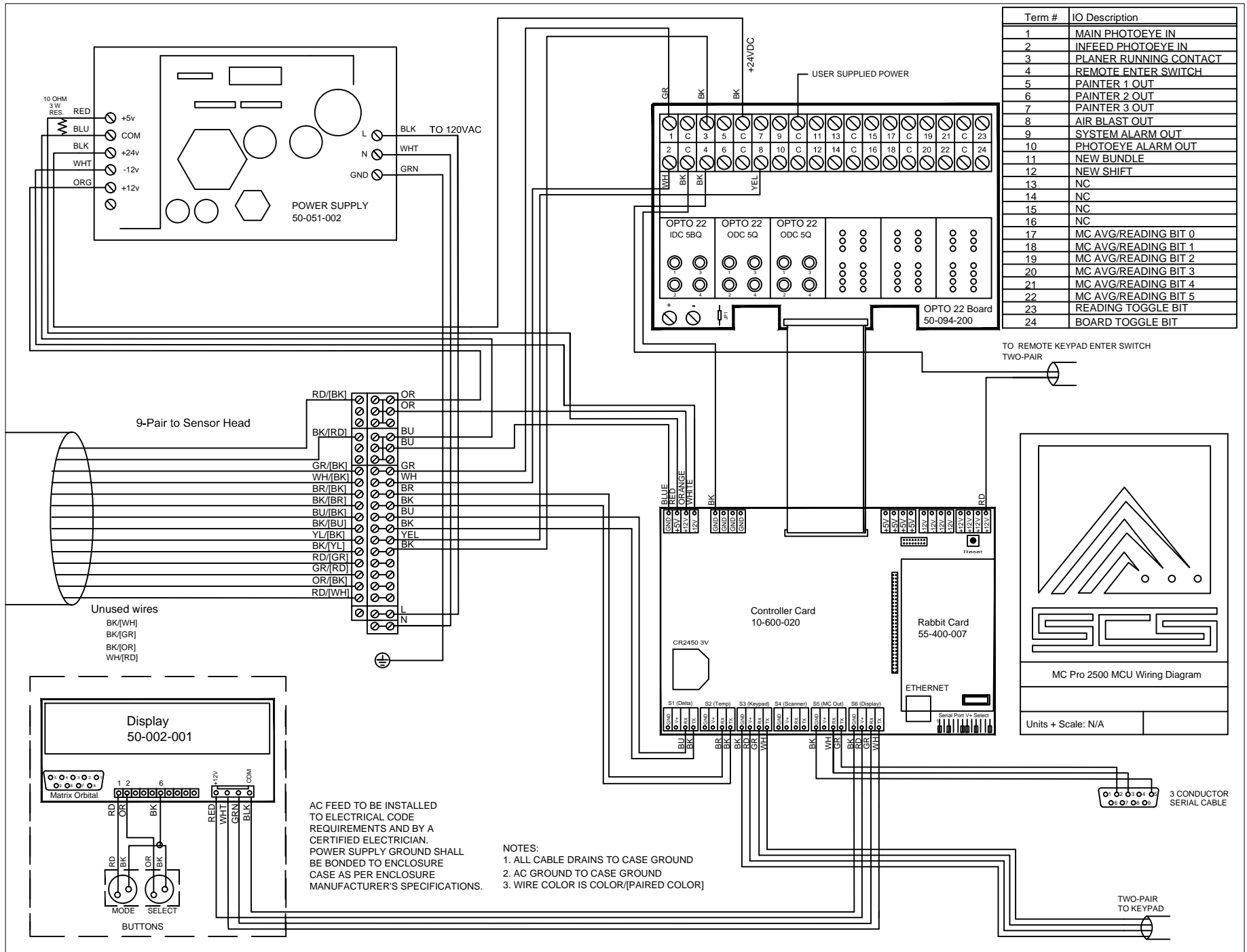


2500 MCU Wiring Diagram



Term #	IO Description
1	MAIN PHOTOEYE IN
2	INFEED PHOTOEYE IN
3	PLANER RUNNING CONTACT
4	REMOTE ENTER SWITCH
5	PAINTER 1 OUT
6	PAINTER 2 OUT
7	PAINTER 3 OUT
8	AIR BLAST OUT
9	SYSTEM ALARM OUT
10	PHOTOEYE ALARM OUT
11	NEW BUNDLE
12	NEW SHIFT
13	NC
14	NC
15	NC
16	NC
17	MC AVG/READING BIT 0
18	MC AVG/READING BIT 1
19	MC AVG/READING BIT 2
20	MC AVG/READING BIT 3
21	MC AVG/READING BIT 4
22	MC AVG/READING BIT 5
23	READING TOGGLE BIT
24	BOARD TOGGLE BIT